

**Quaker
Council for
European
Affairs**



WHAT IS QCEA?

QCEA works to bring a vision based on the Quaker commitment to **peace, justice and equality** to Europe and its institutions.

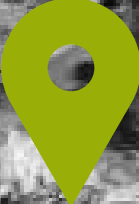
QCEA puts Quaker values at the heart of EU policymaking:

- Evidence-based policy research
- Human-centred stakeholder advocacy
- Creating space for "quiet diplomacy"



THE IMPORTANCE OF THE EU

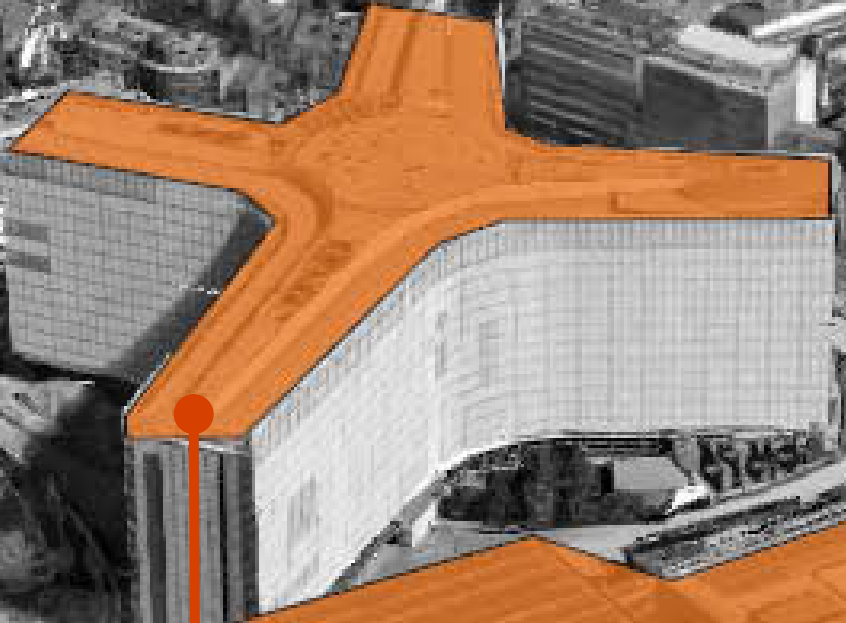
NATO



QUAKER HOUSE



European Parliament



European Commission

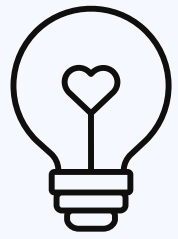


European Council



European External Action Service

WHAT'S SPECIAL ABOUT QCEA?



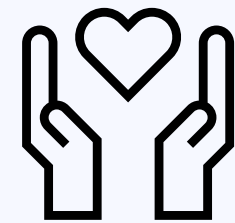
**Can work across
issue boundaries**



**Safe space, convenor
of challenging
conversations**



**'Independent' -
not funded by EU**



**Values-driven,
non-confrontational
approach**

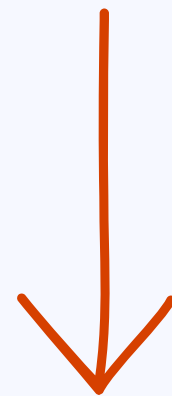


WHAT KIND OF CHANGE DO WE NEED NOW?

Change



Repair



Reform



TRANSFORM



**WHAT KIND
OF CHANGE
DO WE
FOCUS ON?**




PEACE

Climate justice

Migration

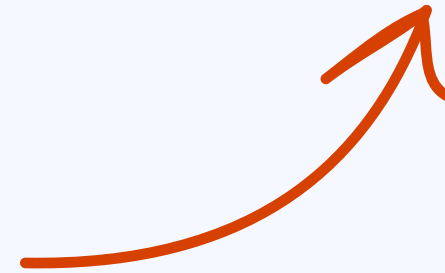
**Dialogues
for**

transformation

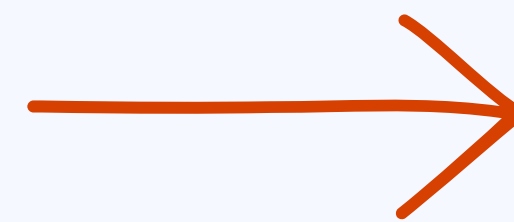


**WHY
CLIMATE
CRISIS?**

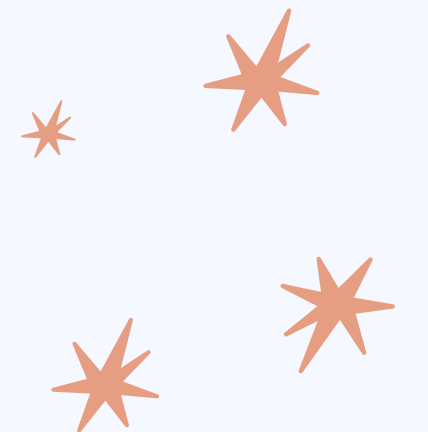
**It's urgent and it will
change everything**



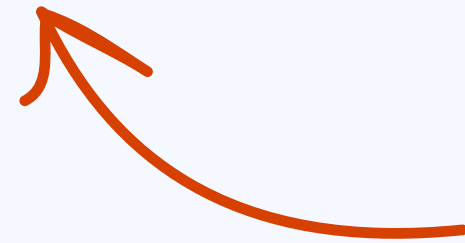
**Few organisations are looking
at it through a peace lens**



**Opportunities to work
with QUNO & QPSW**



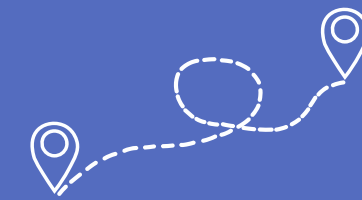
**The system is broken - it's
time to look at alternatives**



**Important to challenge
'othering' now - it will only get
worse as crises deepen**

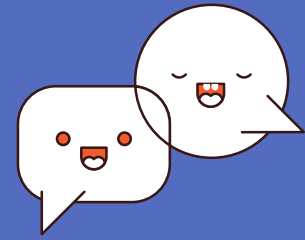


**Our peacebuilding lens
brings a new perspective**



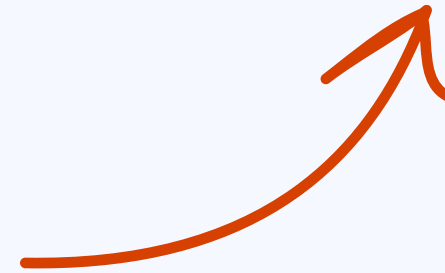
WHY MIGRATION?





WHY DIALOGUES FOR TRANSFORMATION?

We need transformative change



Complex problems can only be solved if people with differing views are able to listen to each other



QCEA is one of the few organisations in Brussels that can do this kind of work





BEING PATTERNS AND EXAMPLES

Living and working
our values

How we work
together

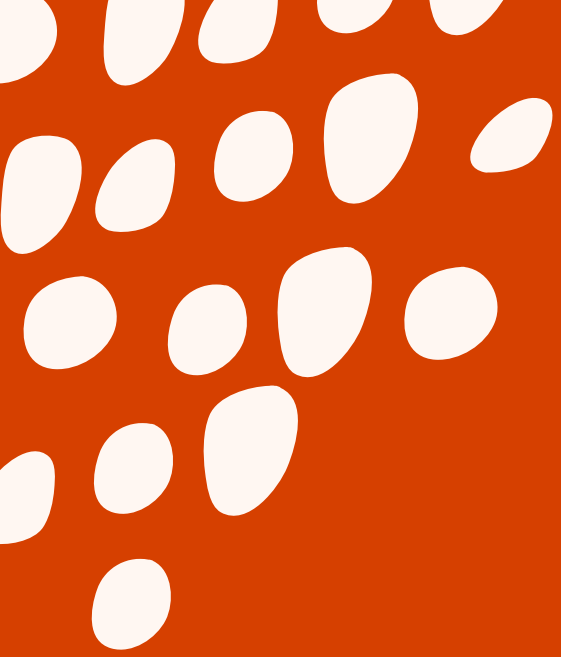
How we
communicate

Tackling the ways
we perpetuate
unjust systems

Live
adventurously

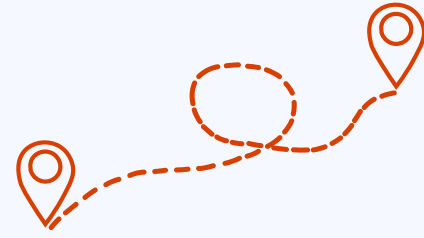
Learning and
accountability





MIGRATION & PEACE





MIGRATION & PEACE

WHAT IS A PEACE APPROACH TO MIGRATION?

Migration is normal

Migration is and has always been a reality and a part of the human story.

EU should work to ensure that people who decide to migrate are able to do so safely and without fear of violence.

EU POLICY

Current levels of displacement are highest on record

Forced migration is in and of itself a form of violence.

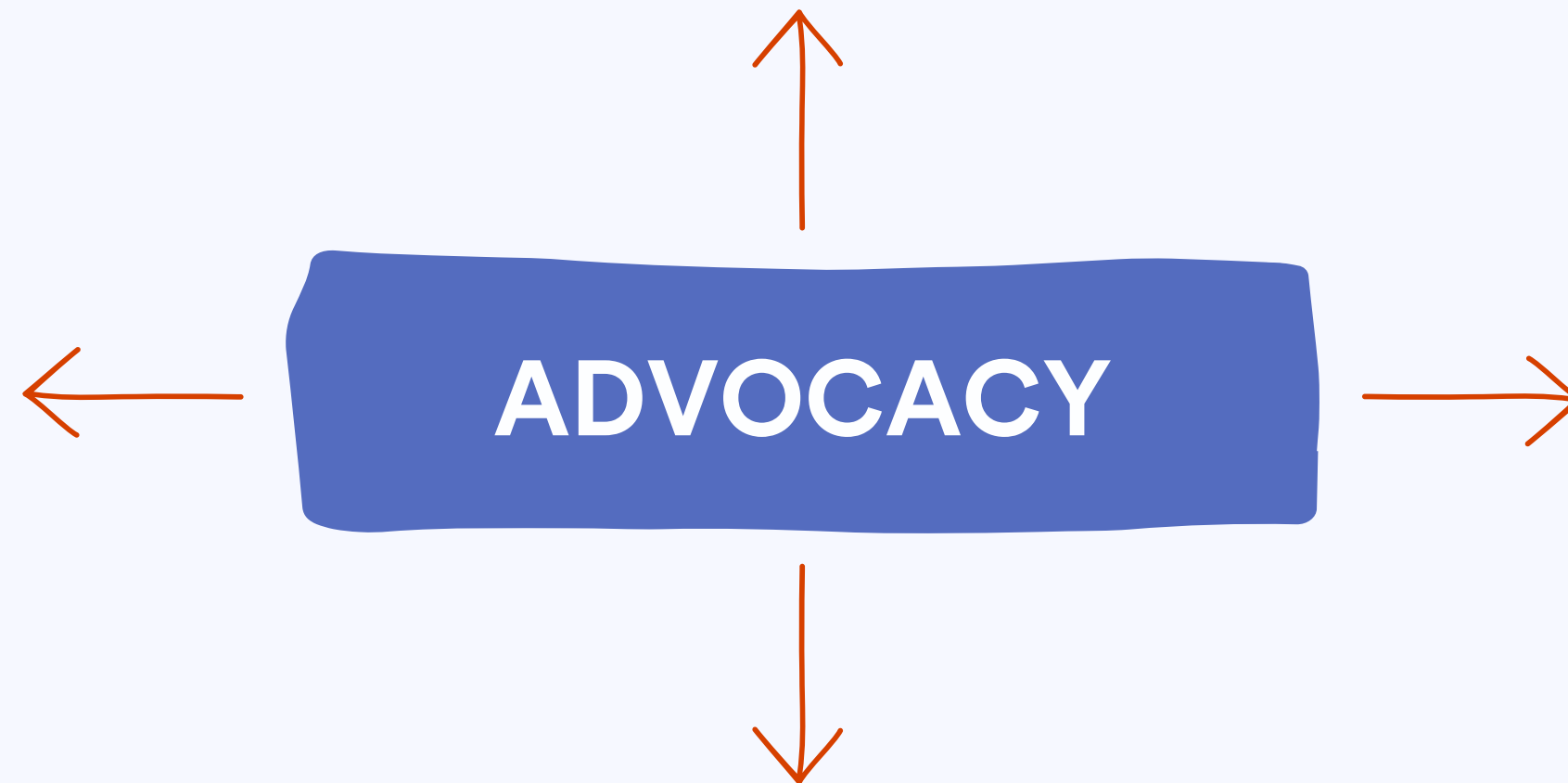
EU external action should aim not to stop migration, but to reduce displacement through development, cooperation and climate action.

WHAT QCEA DOES

Create policy conditions to support safe, equitable & responsive migration systems that contribute to long-term, sustainable peace between all actors involved in migration.

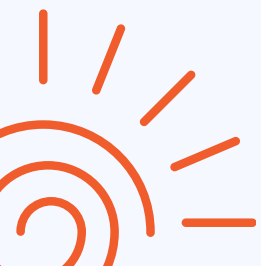


Work to ensure that EU external action supports people's agency to make decisions about their lives by reducing, rather than exacerbating, structural violence in the system.



Open up and co-create spaces of imagination and possibility to gain new perspectives on migration and mobility.

Expand the scope of peacebuilding action on migration within Europe, particularly action to tackle structural violence, counter hate speech and safeguard the rights of migrants, minorities and people of African descent.





CLIMATE JUSTICE & PEACE





CLIMATE JUSTICE AND PEACE



WHY?

The European responses to the climate crisis do not go far enough

New policies could lead to conflicts

Military and the arms industry lead to environmental damage



WHAT QCEA DOES



Create space for imagination – Exploring and deepening approaches to understand interdependency of lives, limits and potentials of the Earth

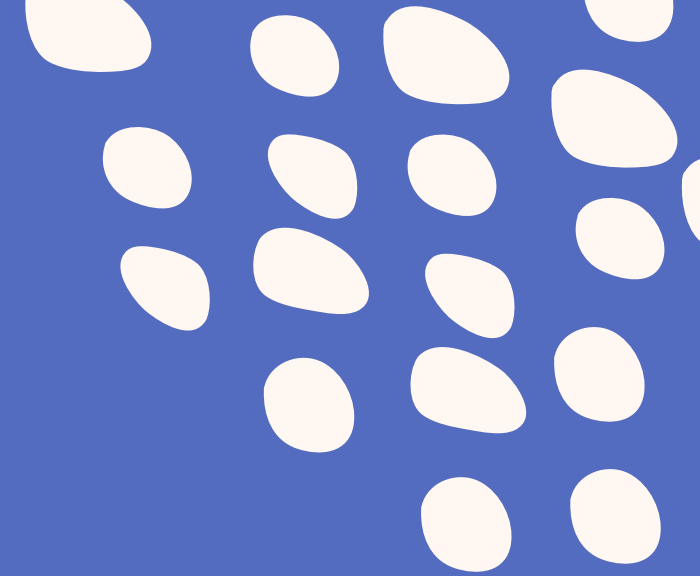
Establish a Just and Social Transition for all.

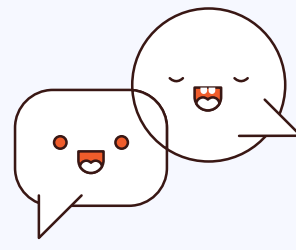
ADVOCACY

Integrate Conflict-Sensitive Approaches into the EU Climate Policies and Practices.

Promote examples of non-militarized and peaceful practices to contribute to conflict transformation in contexts of the climate crisis.

DIALOGUES FOR TRANSFORMATION



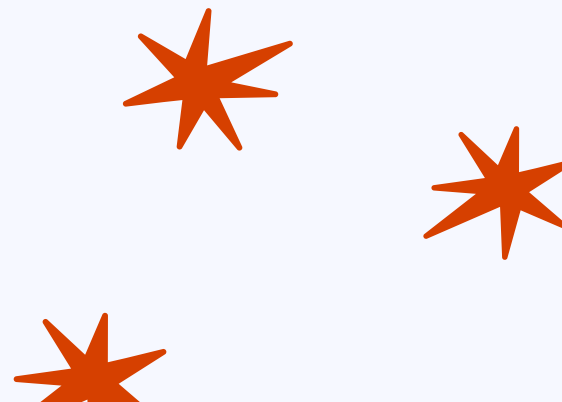


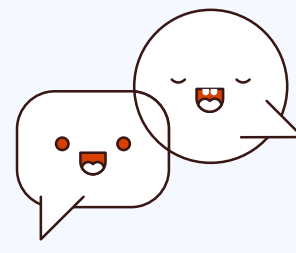
DIALOGUES FOR TRANSFORMATION

DIALOGUE IS AT THE HEART OF TRANSFORMATIONAL CHANGE

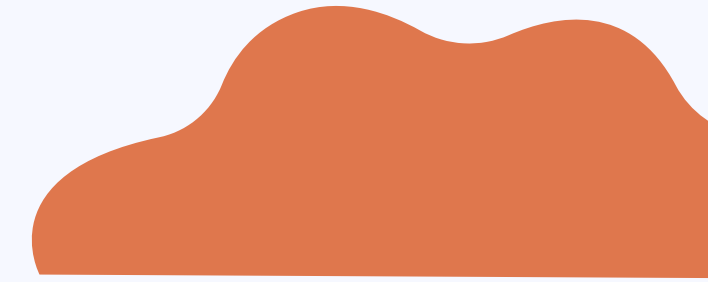


QCEA is well-placed to do this kind of work in Brussels, making use of Quaker House and building on Quaker peace and conflict mediation work.

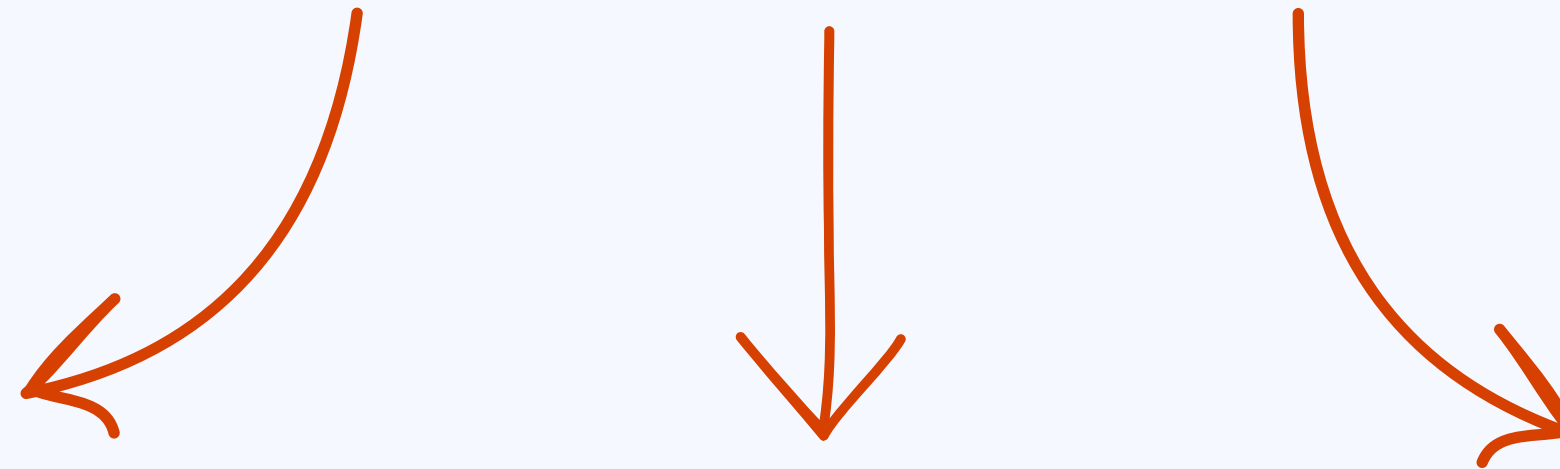




DIALOGUES FOR TRANSFORMATION



BEGINNING



**Building relationships
with people within and
outside European
institutions**

**Identifying issues
where people are stuck**

**Experimenting
with a range of creative
and explorative
approaches**



HOW CAN YOU SUPPORT QCEA?

Keep up to date



QCEA publishes a regular newsletter and also has a presence on Facebook, Twitter and LinkedIn and our website.

Volunteer



Consider if you or anyone you know might be willing to volunteer skills that QCEA could benefit from (proofreading, translating, editing, creative skills etc.)

Spread the word



If you would like to speak to your local Meeting or other group/organisation about QCEA and our work, we can supply you with some basic information and speaking notes.

Donate



QCEA's work relies on generous individual donations from friends across Europe. Donating is easy and secure - visit

www.qcea.org/donate



THANK YOU!

www.qcea.org

TO DONATE INSIDE THE UK:

British Friends of QCEA

CAF Bank

Account no: 00004748

Sort code: 40-52-40

TO DONATE OUTSIDE THE UK:

Quaker Council for European Affairs

BNP Paribas Fortis

IBAN: BE58 2100 5598 1479

BIC: GEBA BEBB 36A

